



MeiStream Plus

Class C Bulkmeter for cold potable water DN 40...150 PN 16

Main characteristics

- Meter with MID pattern approval acc. to annex MI001
- Exchangeable metrological unit with MID pattern approval acc. to annex MI001
- Unique measuring range; $Q_3/Q_1 \geq 315$ in horizontal installation
- High overload capability
- No straight inlet length necessary (U0D0 acc. to OIML R49:2013 and ISO 4064-1:2017)
- Drinking water approved acc. to AS4020
- Meter body in short (WP) and long (WS) overall length acc. to DIN 19625 and ISO 4064-1:2017 available
- Meter can be submerged; protection class IP68
- Used materials are temperature resistant up to 70 °C
- Register prepared for HRI-Mei pick-up
- Use of optical pulsers type OD is still possible

APPLICATIONS

- Measurement for billing of cold potable water up to 50 °C
- Measurement of medium and high flowrates
- Measurement of low flow e. g. in light load periods
- For leakage control

MATERIALS

Body	Cast iron
Metrological module	Engineering polymer
Rotor	Engineering polymer
We also use the following materials	Brass Stainless steel

ENVIRONMENTAL CONDITIONS

- According to ISO 4064-1:2017
- Environmental class O acc. to OIML R49-1:2013
- Environmental temperature: 5 °C ... 70 °C
- Mechanical environmental conditions: class M2

Available options

- With encoder register for direct meter readout via data protocol (M-Bus, MiniBus, Sensus, IEC 1107)
- HRI-Mei factory mounted
- Version for use in hazardous area
- ¼" pressure monitoring port

Approval Mark

Meter cpl. and exchangeable metrological module

Marking CE M-XX* 0102

DE-09-MI001-PTB 012

* year of production

MeiStream Plus

Class C Bulkmeter for cold potable water DN 40...150 PN 16

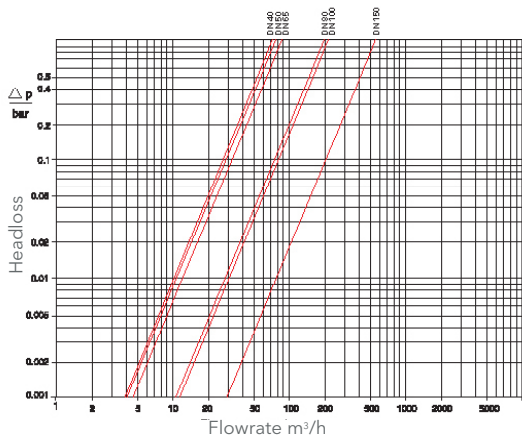
METROLOGICAL DATA ACC. TO MANUFACTURERS VALUES

	Size	DN	40	50	65	80	100	150
Q_5	Max. Peak Flow	m ³ /h	50	55	60	120	160	400
Q_3'	Continuous Flow	m ³ /h	30	35	40	63	100	250
Q_2	Transitional Flowrate horizontal acc. to MID	m ³ /h	0.13	0.13	0.16	0.25	0.4	0.63
Q_1'	Minimum Flow horizontal	m ³ /h	0.08	0.07	0.1	0.13	0.2	0.35
	Starting Flow	m ³ /h	0.03	0.03	0.035	0.04	0.065	0.12

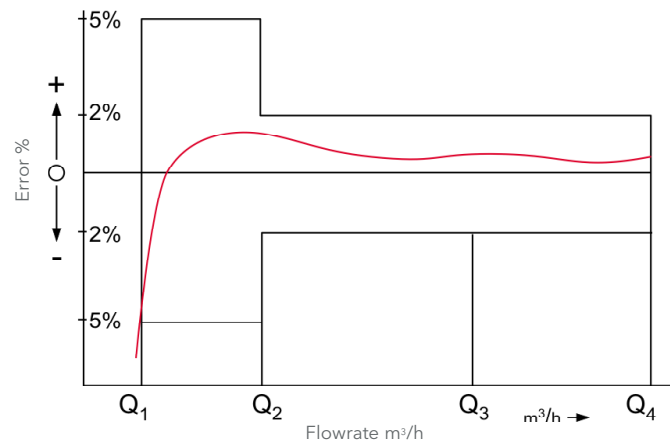
METROLOGICAL DATA ACC. TO 2014/32/EU (MID)

	Size	DN	40	50	65	80	100	150
Q_4	Overload Flowrate acc. to MID	m ³ /h	31.25	31.25	50	78.75	125	312.5
Q_3	Permanent Flowrate acc. to MID	m ³ /h	25	25	40	63	100	250
Q_2	Transitional Flowrate horizontal acc. to MID	m ³ /h	0.13	0.13	0.16	0.25	0.4	0.63
Q_1	Minimum Flowrate horizontal acc. to MID	m ³ /h	0.08	0.08	0.1	0.16	0.25	0.4
Q_3/Q_1	max. Ratio		315	315	400	400	400	630
Q_3/Q_1	Standard Marking		315	315	315	315	315	315
Δp	Headloss at Q_3 acc. to ISO 4064-1:2017	bar	0.09	0.08	0.17	0.07	0.16	0.14

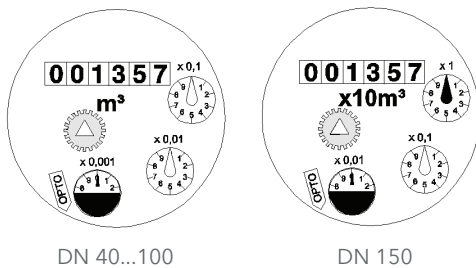
Typical Headloss Curve



Typical Error Curve



Dial





Nominal diameter DN	Smallest reading m ³	Max. reading m ³
40 ... 100	0.0005	999,999.999
150	0.005	9,999,999.99



MeiStream Plus

Class C Bulkmeter for cold potable water DN 40...150 PN 16

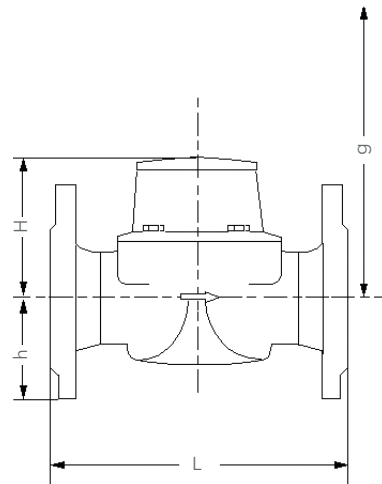
PULSE VALUES

Pulser Type		Pulse Value DN 40 ... 100	Pulse Value DN 150
HRI-Mei (Leaflet see LS 8400)		0.01; 0.05; 0.1 or 1 m ³	0.1; 0.5; 1 or 10 m ³
OD 01 (Leaflet see LB 8300)		0.001 m ³	0.01 m ³
OD 03 (Leaflet see LB 8300)		0.01 m ³	0.1 m ³

INSTALLATION

Pipe	horizontal	
Meter head	upwards	

Dimension Picture



Installation Requirements

- Unrestricted straight pipe upstream 0 x DN
- No abrupt restrictions directly downstream of the meter

Order Example

MeiStream Plus, DN 50, T50, PN16	Type
Drilling AS4087 PN 14 Flanges	Size
Length 270 mm	Max. medium temperature
mechanical register / m ³	Nominal pressure
with MID conformity	Drilling pattern
	Body length
	Register type / unit
	Approval standard

MeiStream Plus

Class C Bulkmeter for cold potable water DN 40...150 PN 16

DIMENSIONS AND WEIGHT

Dimensions	Nominal Diameter	DN	40	50	50	50	50	65	65	80	80	
	Overall length	L	mm	220	200	270	300	311	200	300	200	225
	Height	H	mm	120	120	120	120	120	120	120	150	150
	Height to pipe axis	h	mm	69	73	73	73	73	85	85	95	95
	Dismantling height	g	mm	200	200	200	200	200	200	200	270	270
Weight	Meter complete	kg	8.0	8.5	9.6	9.9	10.3	10.1	12.0	12.4	14.2	
	Metrological module	kg	1.5	1.5	1.5	1.5	1.5	1.5	1.5	3.2	3.2	
	Body	kg	6.5	7.0	8.1	8.4	8.8	8.6	10.5	9.2	11.0	

Dimensions	Nominal Diameter	DN	80	80	80	100	100	100	100	150	150	
	Overall length	L	mm	300	350	413	250	350	360	483	300	500
	Height	H	mm	150	150	150	150	150	150	150	177	177
	Height to pipe axis	h	mm	95	95	95	105	105	105	105	135	135
	Dismantling height	g	mm	270	270	270	270	270	270	270	356	356
Weight	Meter complete	kg	16.3	17.7	18.2	17.0	20.0	20.2	22.8	35.9	44.2	
	Metrological module	kg	3.2	3.2	3.2	3.2	3.2	3.2	3.2	5.9	5.9	
	Body	kg	13.1	14.5	15.0	13.8	16.8	17.0	19.6	30.0	38.3	



Xylem.com | Sensus.com

Australia Inquiries | Xylem Water Solutions Australia Ltd. | 2/2 Capicure Drive, Eastern Creek, NSW 2766 | Australia | Phone 13 19 14 | solve@xylem.com

International Inquiries | Sensus GmbH Hannover | Meineckestr. 10 | 30880 Laatzen | Germany | +49 5102 743177 info.int@xylem.com

©2020 Sensus. All products purchased and services performed are subject to Sensus' terms of sale, available at sensus.com. Sensus reserves the right to modify these terms and conditions in its own discretion. The Sensus logo and other Sensus products or services referenced are registered trademarks of Sensus.

This document is for informational purposes only, and SENSUS MAKES NO EXPRESS WARRANTIES IN THIS DOCUMENT. FURTHERMORE, THERE ARE NO IMPLIED WARRANTIES, INCLUDING WITHOUT LIMITATION, WARRANTIES AS TO FITNESS FOR A PARTICULAR PURPOSE AND MERCHANTABILITY. ANY USE OF THE PRODUCTS THAT IS NOT SPECIFICALLY PERMITTED HEREIN IS PROHIBITED.

