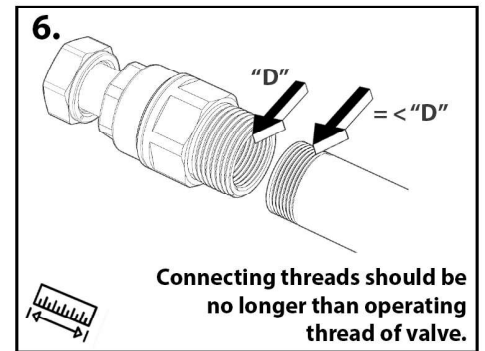
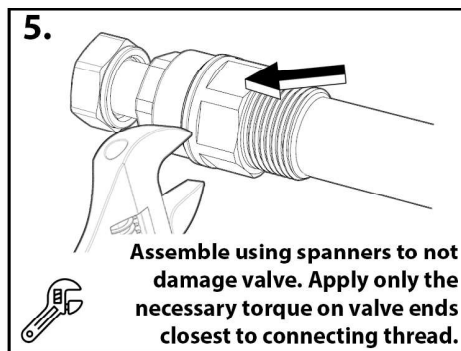
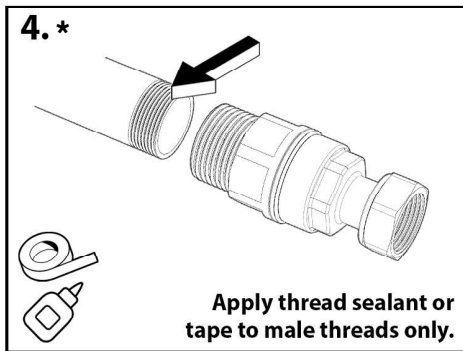
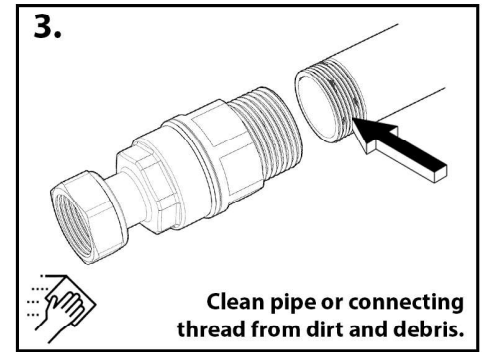
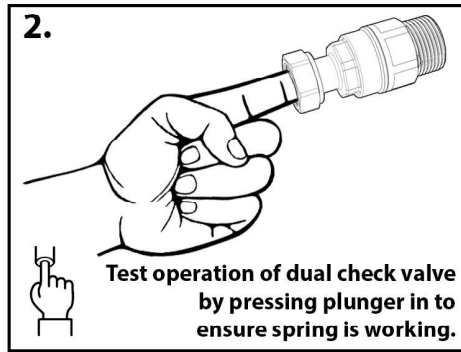
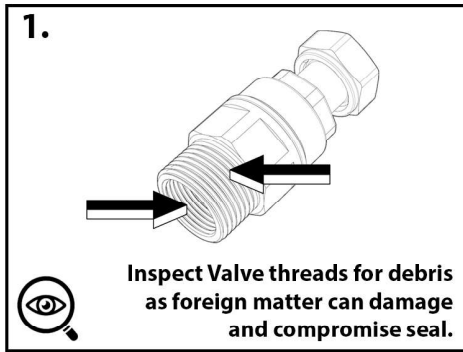


Appendix B

Dual Check Valves Installation Instructions

For Dual Check Valves: ZC707920, QC707920, C707820, ZC707925, QC707925, C707825



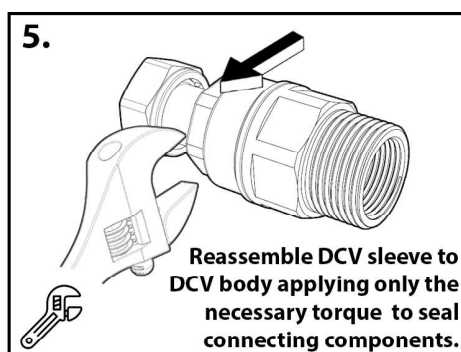
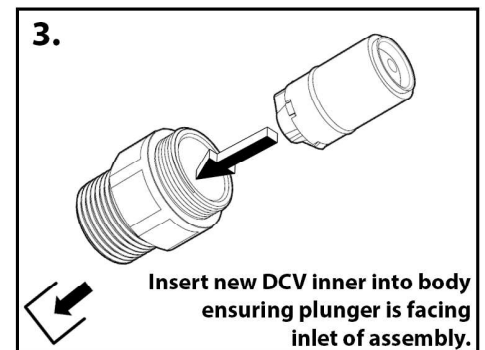
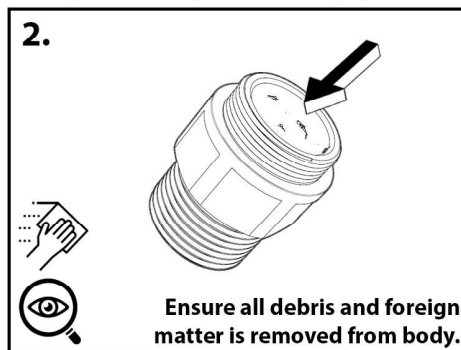
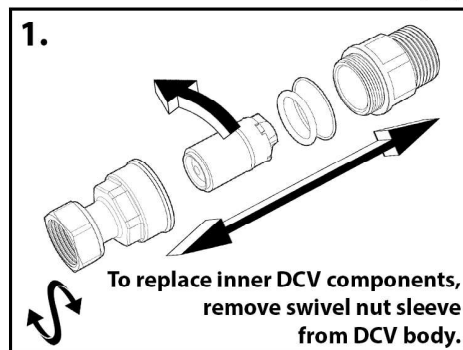
(For connections to PE pipe, please refer to Appendix D.)

(note 4* AS4020:2018 approved thread tape / sealants only)

Appendix C

Maintenance of Dual Check Valves

For Dual Check Valves: ZC707920, QC707920, C707820, ZC707925, QC707925, C707825



(note 4* AS4020:2018 approved non-toxic lubricants only)

Appendix D.

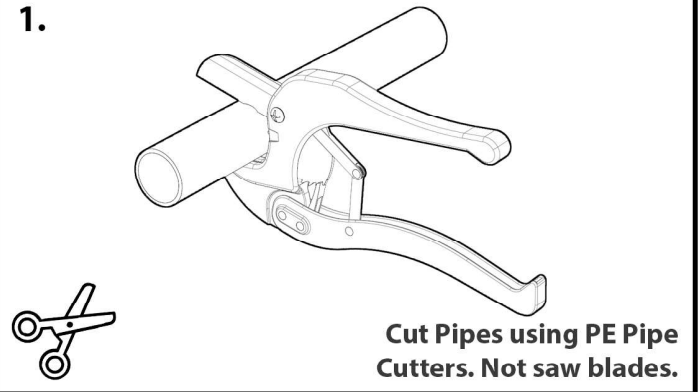
Mechanical Compression Unions for Polyethylene Pipe

Valves: QC7094, ZC7094, NC7094, NC7095,
 QC7095, ZC7095, C2532, C7093.

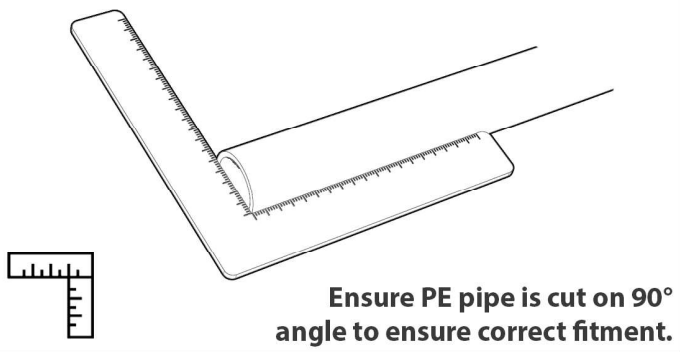
Fittings: ZC7079, QC7079, C7078, PS4000.

Dual Check Valves: ZC707925, QC707925,
 C707825 Meter Housing

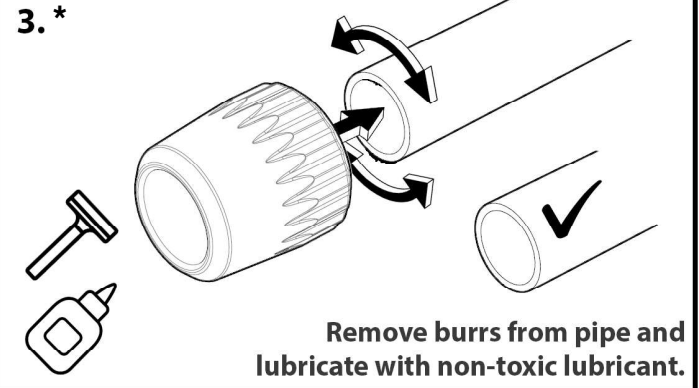
1.



2.



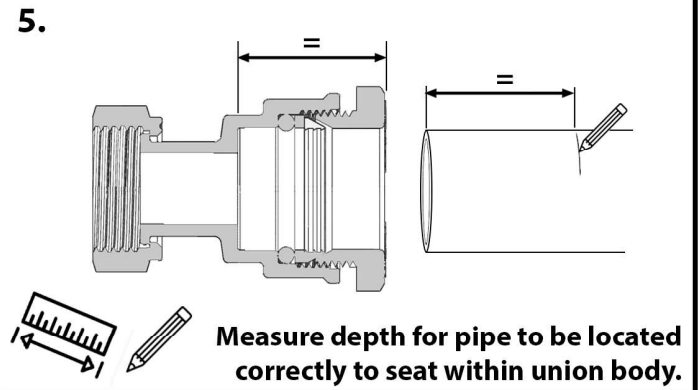
3.*



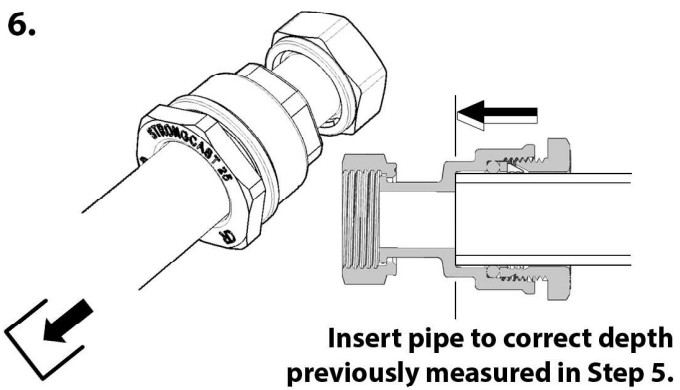
4.



5.



6.



7.

