

## iPERL<sup>®</sup> Australian Version

### Static electromagnetic meter with remanent magnetic technology



#### Main characteristics

- Simplicity at its best for managing a meter fleet
- 15 year battery lifetime
- No moving parts
- Best in class R800 Q<sub>3</sub>/Q<sub>1</sub> ratio for all sizes (MID certified)
- Eco-friendly design to dispose of lithium batteries at end of life
- Made from recyclable Composite materials
- Made for the toughest environments
- Fitted with Earthing Strap equivalent to 16 mm<sup>2</sup> of copper

#### APPLICATIONS

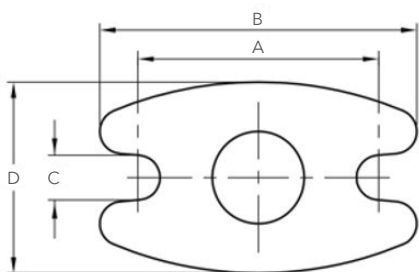
- Measurement for billing of
  - cold potable water up to 50 °C
  - grey water
  - irrigation water

#### Standards

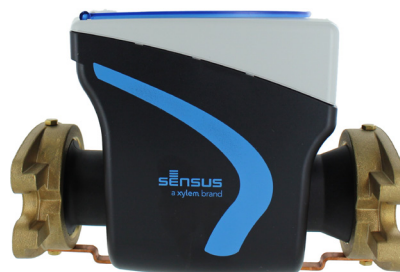
- NMI R49

#### FLANGE DIMENSIONS (MM)

Size	DN32	DN40
A	84 ± 1.5	92 ± 1.5
B	110 ± 3.0	124 ± 3.0
C	14 ± 1.5	14 ± 1.5
D	65 ± 3.0	76 ± 3.0



Flange dimensions



iPERL DN 32



iPERL DN 25

TECHNICAL DATA

	DN20	DN25	DN32	DN40
Minimum Flow Q <sub>1</sub>	0.005	0.008	0.013	0.02
Transitional Flow Q <sub>2</sub>	0.008	0.013	0.02	0.032
Maximum continuous flow Q <sub>3</sub>	4	6.3	10	16
Overload Flow Q <sub>4</sub>	5	7.875	12.5	20
Flow rate ratio	800 <sup>1)</sup>			
Maximum Admissable Temperature	50 °C			
Maximum Admissable Pressure	1600 kPA			
Accuracy Class	2			
Electromagnetic Class	E1 & E2			
Environmental Class	B & O			
Flow Profile Sensitivity Class	U0/D0			
Press Loss Class	Dp40 (0.04 Mpa)			
Orientation	All positions			
Flow Direction	forward/reverse			
Body	Composite			
Meter Length	154	178	190	232
Connection type (AS 3565.1-2010)	Threaded	Threaded	Flanged	Flanged
	Nut Tail, diameter 32.50x14 TPI	Nut Tail, diameter 38.86x14 TPI	Oval	Oval
	Ball joint, diameter 36.60 x 14 TPI	Ball joint, diameter 43.76 x 14 TPI	see drawing	see drawing
Conductive continuity bridge	DZR brass connectors + brass strip (compliant with AS 2345)			
Power supply	Lithium metal battery			
Battery Lifetime	15 years (under normal operational conditions)			
Strainer	optional			
Non-return valve (AS 2845)	optional, Double Check Valve	optional, Double Check Valve	optional, 2 x Single Check Valves	optional, 2 x Single Check Valves
Minimum Water conductivity (microS/cm)	50			
Display	999 999 .999 m <sup>3</sup> in 0.001 m <sup>3</sup>			
Communication frequency/protocol	433 MHz, ISM / SensusRF, wM-Bus (OMS)			

<sup>1)</sup> also available at R=160, 250, 400

Other Versions

- 169 MHz/ wM-Bus (Wize)



Xylem.com | Sensus.com

Australia Inquiries | Xylem Water Solutions Australia Ltd. | 2/2 Capicure Drive, Eastern Creek, NSW 2766 | Australia | Phone 13 19 14 | [solve@xylem.com](mailto:solve@xylem.com)

International Inquiries | Sensus GmbH Hannover | Meineckestr. 10 | 30880 Laatzen | Germany | +49 5102 743177 [info.int@xylem.com](mailto:info.int@xylem.com)



©2020 Sensus. All products purchased and services performed are subject to Sensus' terms of sale, available at [sensus.com](https://www.sensus.com). Sensus reserves the right to modify these terms and conditions in its own discretion. The Sensus logo and other Sensus products or services referenced are registered trademarks of Sensus.

This document is for informational purposes only, and SENSUS MAKES NO EXPRESS WARRANTIES IN THIS DOCUMENT. FURTHERMORE, THERE ARE NO IMPLIED WARRANTIES, INCLUDING WITHOUT LIMITATION, WARRANTIES AS TO FITNESS FOR A PARTICULAR PURPOSE AND MERCHANTABILITY. ANY USE OF THE PRODUCTS THAT IS NOT SPECIFICALLY PERMITTED HEREIN IS PROHIBITED.